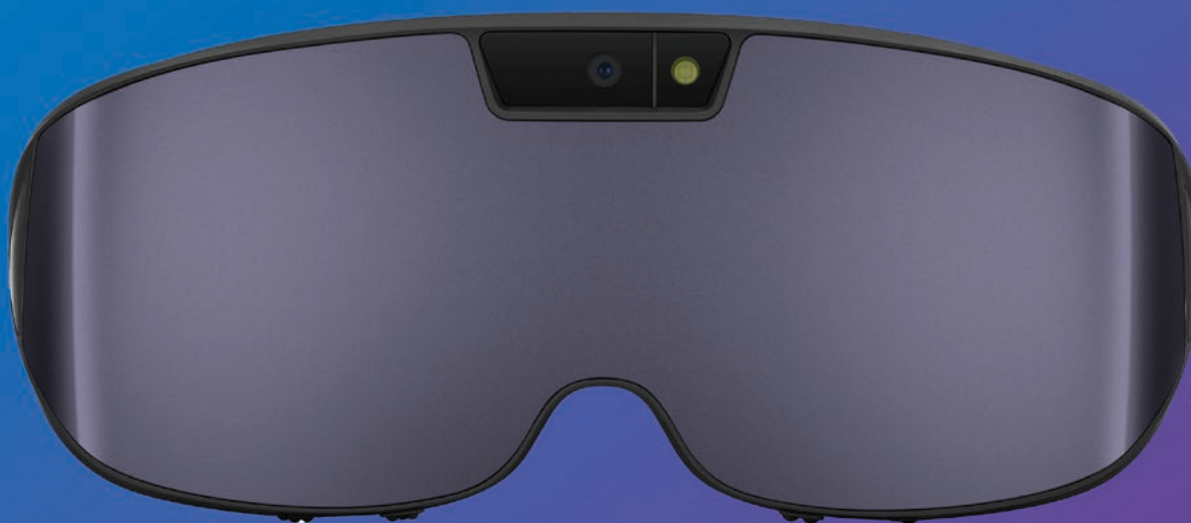


Inspire[®]

Lightweight Medical Testing Headset

Perimetry, Patient Education, Practice Building





PERIMETRY, PATIENT EDUCATION, PRACTICE BUILDING

Upgrade your practice with super lightweight, comfortable vision testing technology - Inspire® Medical Testing Headset. Modernise your patients' visual field testing experience while streamlining your clinical workflow with Inspire perimetry, patient education, and practice building media tools in high-definition virtual reality.



Inspire is now the first visual field that patients in the practice will take, and its far outnumbering the number of traditional bowl based tests we get on any given day.

Nathan Radcliffe, MD

I think every Glaucoma doctor has this challenge, that is in trying to find a system that is comfortable for a patient to use, that they don't mind using at every visit.

Shamil Patel, MD



**Includes SAP
Test Patterns**



**Built-In Diopter
Compensation**



**Functions in
Ambient Light**



No Eye Patch

LIGHTWEIGHT

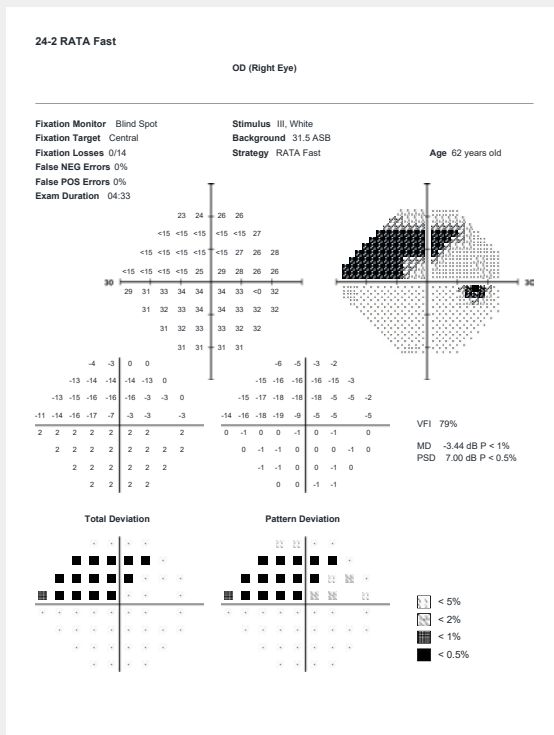
At just 180 g (without light seal), Inspire is among the lightest wearable testing devices in the market

ACCURATE

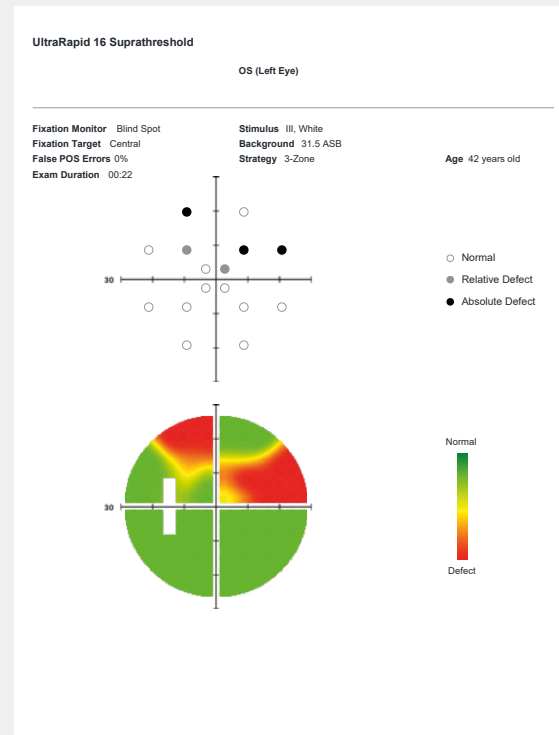
0.94 correlation in mean deviation (MD) to HFA¹

MULTIFUNCTIONAL

A platform for patient education and practice engagement



24-2 RATA Report



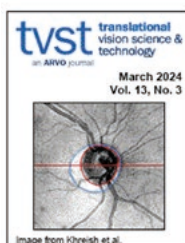
Screening Report

Sensitivity of Inspire (RATA-Standard) is comparable to traditional perimetry (SITA-Standard) between 23-40dB with high concordance in glaucoma staging.¹

HIGH CORRELATION

The NOVA clinical trial confirmed that Inspire test results correlate strongly with the current clinical standard, in terms of sensitivity at individual test locations, mean deviation (correlation of 0.94) and glaucoma staging (based on US Medicare definitions).¹ These results underscore the accuracy and reliability of Inspire visual field testing.

SCIENTIFIC RIGOR



March 2024
Volume 13, Issue 3
ISSUE

OPEN ACCESS

Glaucoma | March 2024

Validation of a Wearable Virtual Reality Perimeter for Glaucoma Staging, The NOVA Trial: Novel Virtual Reality Field Assessment

Chris Bradley; Iqbal Ike K. Ahmed; Thomas W. Samuelson; Michael Chaglasian; Howard Barnebey; Nathan Radcliffe; Jason Bacharach

+ Author Affiliations & Notes

Translational Vision Science & Technology March 2024, Vol.13, 10.
doi:<https://doi.org/10.1167/tvst.13.3.10>

SPECIFICATIONS

Peripheral range (distance)	Up to 70°
Stimulus dynamic range	15-40 dB
Background illumination	10 cd/m ²
Stimulus size	Goldmann III
Stimulus duration	200 ms
Stimulus generation	Static Perimetry
Test methods	Monocular, White on White Perimetry
Test patterns	30-2, 24-2, 10-2, UltraRapid 16, Rapid 50
Test strategies	RATA Standard, RATA Fast, 3-Zone Suprathreshold
Fixation controls	Central
Correction range	0 to -8 D
Pupillary distance	61-69 mm
Optical System of Visual Target Presentation	53 mm-LCD-Panel with Pancake Lens
Headset Weight	270 g (180 g without light seal)
Networking	Wi-Fi/Ethernet, DICOM, PDF, JPG File Output



Inspire and Maestro2 OCT glaucoma testing is powered by Harmony, a simple clinical data management solution that helps drive better patient outcomes.

1. Chris Bradley, Iqbal Ike K. Ahmed, Thomas W. Samuelson, Michael Chaglasian, Howard Barnebey, Nathan Radcliffe, Jason Bacharach; Validation of a Wearable Virtual Reality Perimeter for Glaucoma Staging, The NOVA Trial: Novel Virtual Reality Field Assessment. Trans. Vis. Sci. Tech. 2024;13(3):10. <https://doi.org/10.1167/tvst.13.3.10>.

Inspire is manufactured by RadiusXR®.
Maestro2 is manufactured by Topcon Corporation.
Harmony is manufactured by Topcon Healthcare Solutions EMEA Oy.

IMPORTANT In order to obtain the best results with this instrument, please be sure to review all user instructions prior to operation.

Not all products, services or offers are approved or offered in every market, and products vary from one country to another. Contact your local distributor for country-specific information and availability.



TOPCON CORPORATION

75-1 Hasunuma-cho, Itabashi-ku, Tokyo 174-8580, JAPAN
Phone: +81-(0)3-3558-2522/2502
Fax: +81-(0)3-3965-6898
www.topconhealthcare.jp



MEDENVOY GLOBAL B.V.

Prinses Margrietplantsoen 33 – Suite 123
2595 AM The Hague,
The Netherlands

RADIUSXR, INC.

5994 W Las Positas Blvd., Suite 101
Pleasanton, CA 94588
The United States of America

TOPCON HEALTHCARE SOLUTIONS EMEA OY

Saaristonkatu 9, 90100 Oulu, FINLAND
Phone: +358-20-734-8190
E-mail: thsema.sales@topcon.com
www.topconhealthcare.eu

TOPCON EUROPE MEDICAL B.V.

Essebaan 11, 2908 LJ Capelle a/d IJssel
THE NETHERLANDS
Phone: +31-(0)10-4585077
Fax: +31-(0)10-4585045
E-mail: medical@topcon.com
www.topconhealthcare.eu

TOPCON DANMARK MEDICAL

Praestemarksvej 25, 4000 Roskilde
DANMARK
Phone: +45-46-327500
Fax: +45-46-327555
E-mail: info.todk@topcon.com
www.topconhealthcare.eu/dk_DK

TOPCON SCANDINAVIA

Neongatan 2, P.O.Box 25, 43151 Mölndal
SWEDEN
Phone: +46-(0)31-7109200
Fax: +46-(0)31-7109249
E-mail: info.hcs.se@topcon.com
www.topconhealthcare.eu/sv_SE

TOPCON ESPAÑA

Oficina Principal en España
Frederic Mompou, 4,
08960 Sant Just Desvern, Barcelona, SPAIN
Phone: +34-93-4734057
Fax: +34-93-4733932
E-mail: medica@topcon.com
www.topconhealthcare.eu/es_ES

TOPCON ITALY

Viale dell' Industria 60,
20037 Paderno Dugnano, (MI) ITALY
Phone: +39-02-9186671
E-mail: info_tit@topcon.com
www.topconhealthcare.eu/it_IT

TOPCON FRANCE MEDICAL

1 rue des Vergers, Parc Swen,
Bâtiment 2, 69760 Limonest, FRANCE
Phone: +33-(0)4-37 58 19 40
Fax: +33-(0)4-72 23 86 60
E-mail: topconfrance@topcon.com
www.topconhealthcare.eu/fr_FR

TOPCON DEUTSCHLAND MEDICAL

Hanns-Martin-Schleyer-Straße 41,
D-47877 Willich, GERMANY
Phone: (+49)2154-885-0
Fax: (+49)2154-885-177
E-mail: info@topcon-medical.de
www.topconhealthcare.eu/de_DE

TOPCON POLSKA SP. Z O. O.

ul. Warszawska 23, 42-470 Siewierz
POLAND
Phone: +48-(0)32-670-50-45
Fax: +48-(0)32-671-34-05
E-mail: info.tpl@topcon.com
www.topconhealthcare.eu/pl_PL

TOPCON GREAT BRITAIN MEDICAL

Topcon House, Kennet Side, Bone Lane,
Newbury, Berkshire RG14 5PX
UNITED KINGDOM
Phone: +44-(0)1635-551120
Fax: +44-(0)1635-551170
E-mail: medical.tgbm@topcon.com
www.topconhealthcare.eu/en_UK

TOPCON IRELAND MEDICAL

Unit 292, Block G, Blanchardstown,
Corporate Park 2 Ballycoolin
Dublin 15, D15 DX58, IRELAND
Phone: +353-12233280
E-mail: medical.ie@topcon.com
www.topconhealthcare.eu/en_IE